



CONSIDERATION OF WETLANDS

Wetlands are valuable ecosystems where the land is regularly saturated with water for an extended period of time. There are a variety of types of wetlands, including bogs, marshes and swamps.

All wetlands have three essential characteristics in common: water, saturated soils and specially-adapted plants.

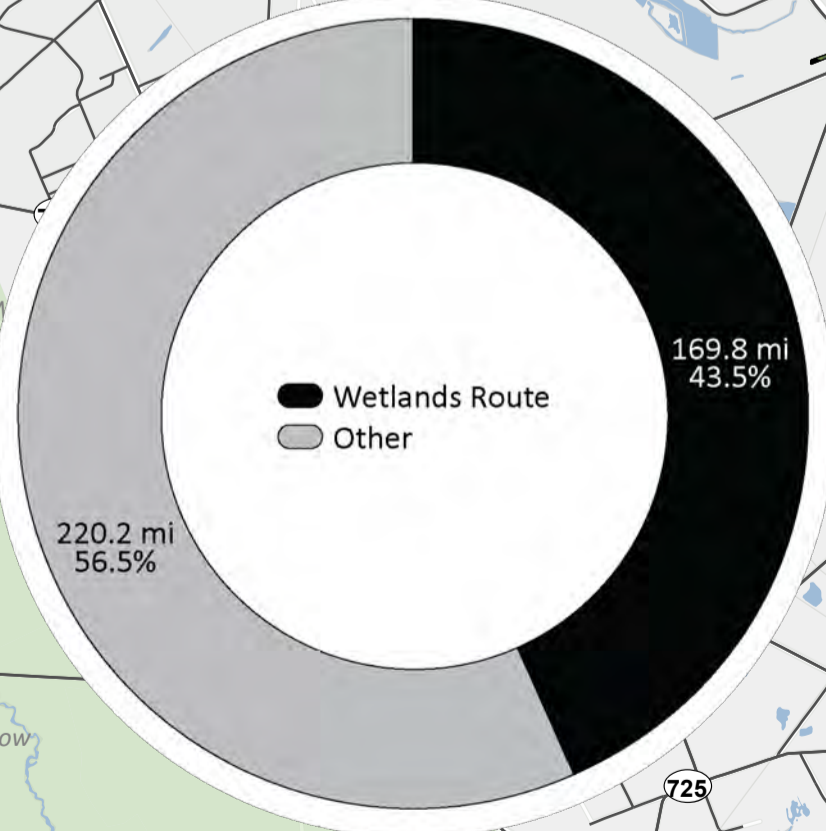
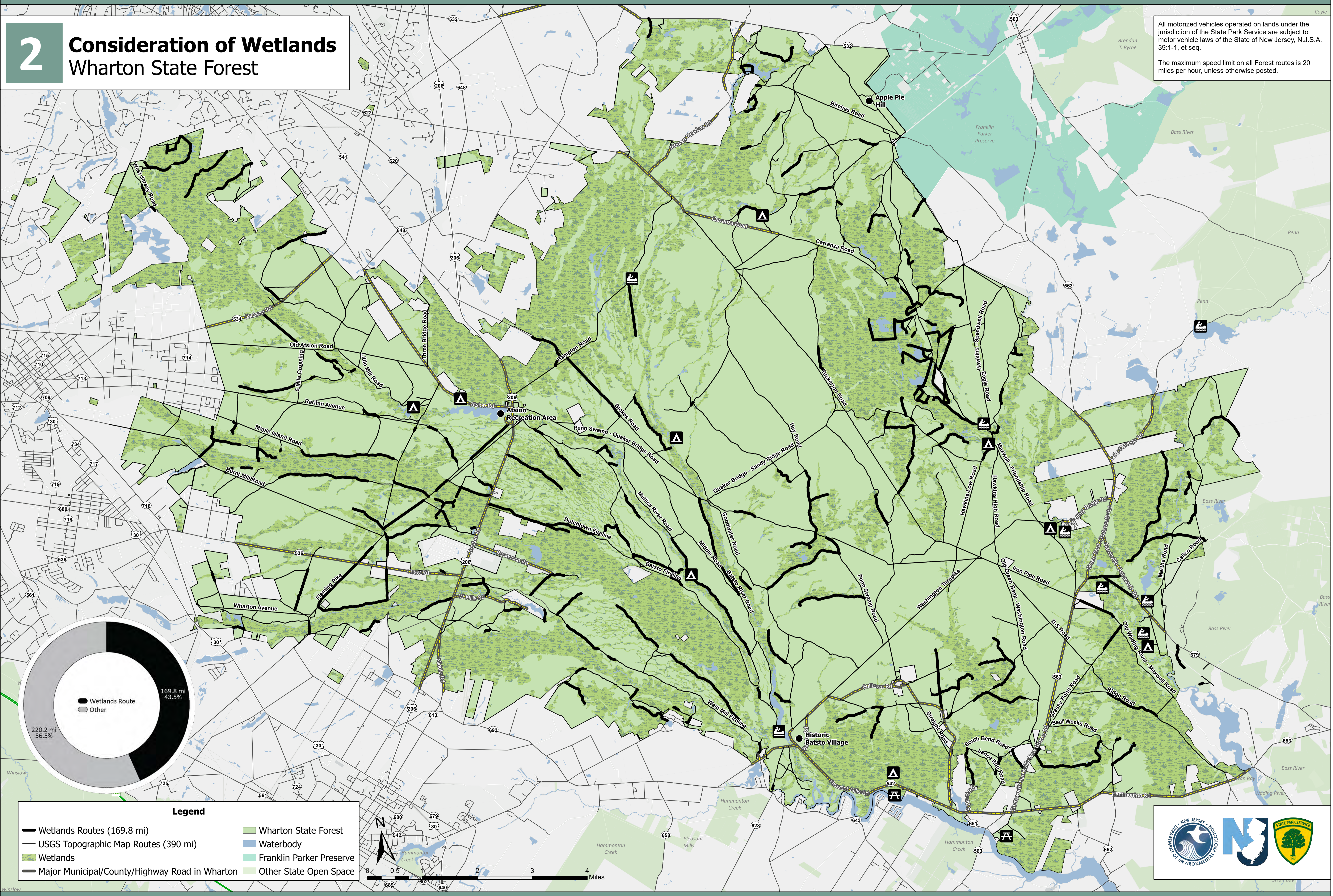
The freshwater aquifers beneath the Pine Barrens provide drinking water for residents of southern New Jersey. The shallow Kirkwood-Cohansey Aquifer provides ninety percent of the water in streams, rivers and wetlands. Water in this aquifer often occurs less than a few feet beneath ground surface and directly supplies water to the trees, shrubs and plants some of which are rare, threatened and endangered.



2

Consideration of Wetlands Wharton State Forest

All motorized vehicles operated on lands under the jurisdiction of the State Park Service are subject to motor vehicle laws of the State of New Jersey, N.J.S.A. 39:1-1, et seq.
The maximum speed limit on all Forest routes is 20 miles per hour, unless otherwise posted.



Legend

- Wetlands Routes (169.8 mi)
- USGS Topographic Map Routes (390 mi)
- Wetlands
- Major Municipal/County/Highway Road in Wharton
- Wharton State Forest
- Waterbody
- Franklin Parker Preserve
- Other State Open Space

