



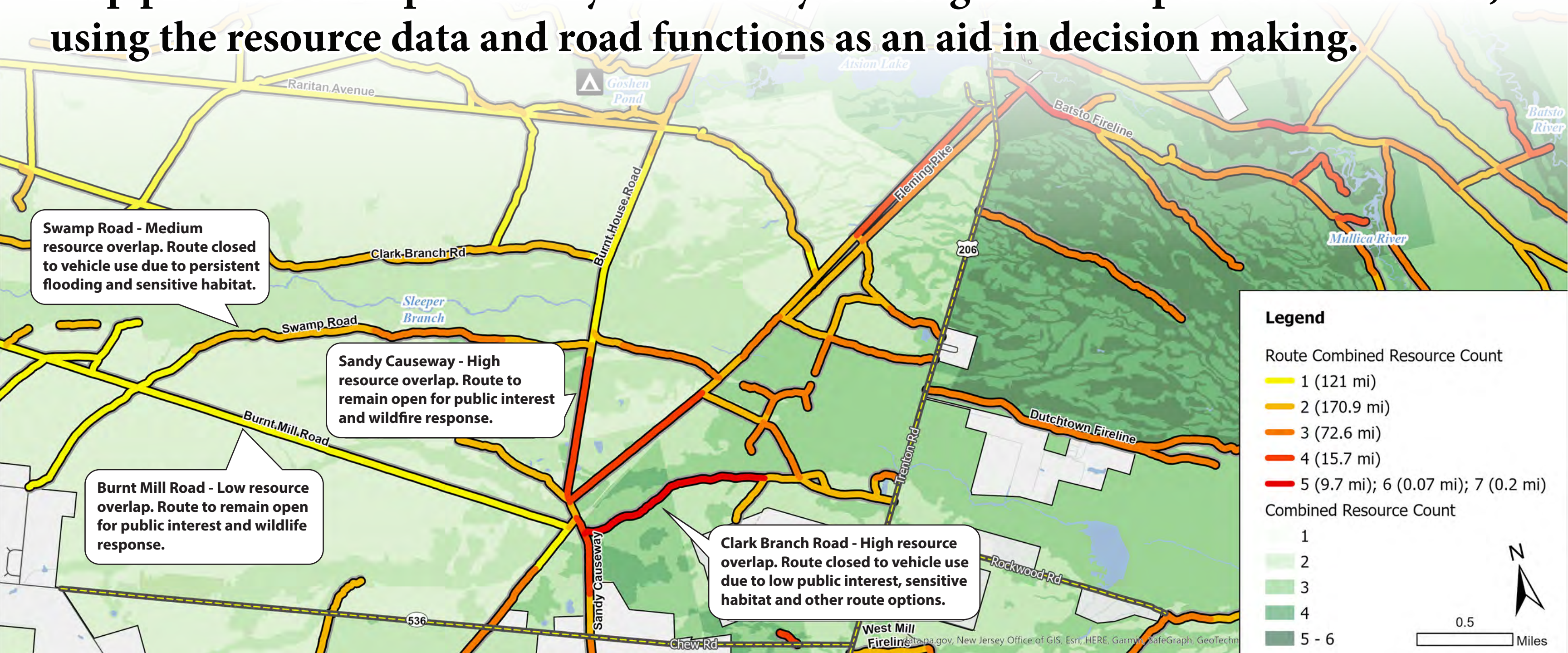
NATURAL & HISTORIC COMBINED RESOURCES

The **Natural & Historic Combined Resources** map depicts how many natural and/or historic resource layers overlap a route segment. This analysis included:

- Wetlands
- Natural Areas
- Endangered and Nongame Species Data (Rank 3, 4 & 5)
- Historic Preservation Office Data
- Natural Heritage Priority Sites

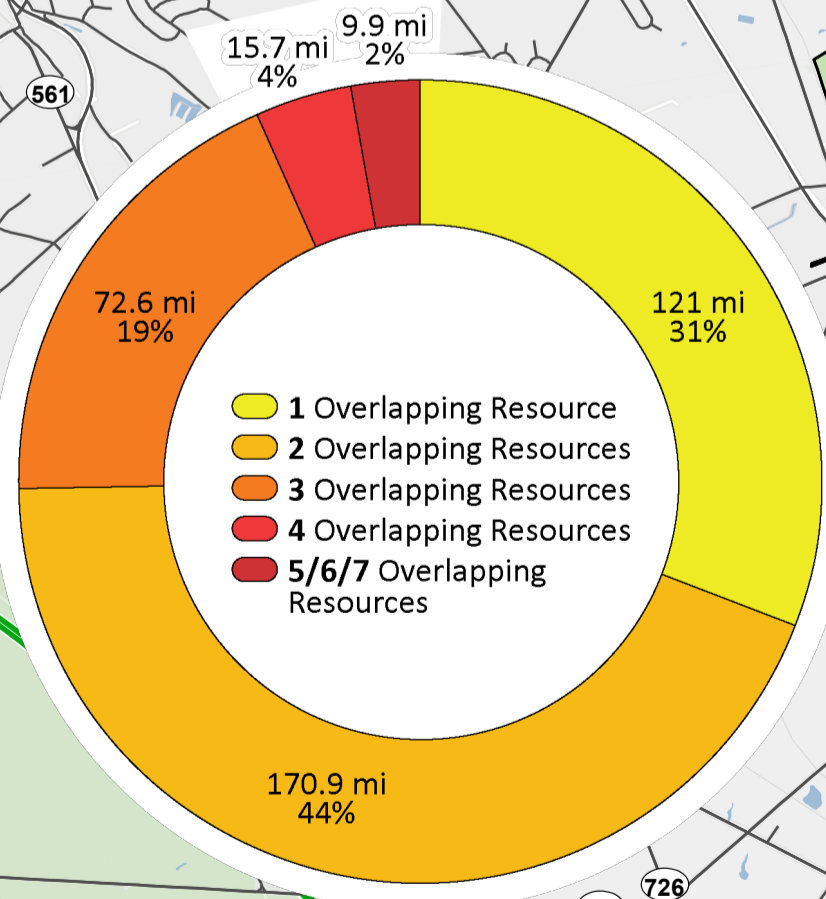
These overlaps vary from 1 to 7. The map shows routes with the lowest number of overlaps appearing as yellow to orange lines and the routes with the highest number of overlaps as darker orange to red lines. Areas with even one affected resource could still be critically important to protect, yet routes with multiple resource overlaps may remain open for vehicle use.

This inset map shows routes with high, medium and low resource overlaps. **The map provides examples of why a road may be designated as open for vehicle use, using the resource data and road functions as an aid in decision making.**



6 Natural & Historic Combined Resources Wharton State Forest

All motorized vehicles operated on lands under the jurisdiction of the State Park Service are subject to motor vehicle laws of the State of New Jersey, N.J.S.A. 39:1-1, et seq.
The maximum speed limit on all Forest routes is 20 miles per hour, unless otherwise posted.



Legend

Route Combined Resource Count

- 1 (121 mi)
- 2 (170.9 mi)
- 3 (72.6 mi)
- 4 (15.7 mi)
- 5 (9.7 mi); 6 (0.07 mi); 7 (0.2 mi)

Major Municipal/County/Highway Road in Wharton
 Wharton State Forest
 Waterbody
 Franklin Parker Preserve
 Other State Open Space

