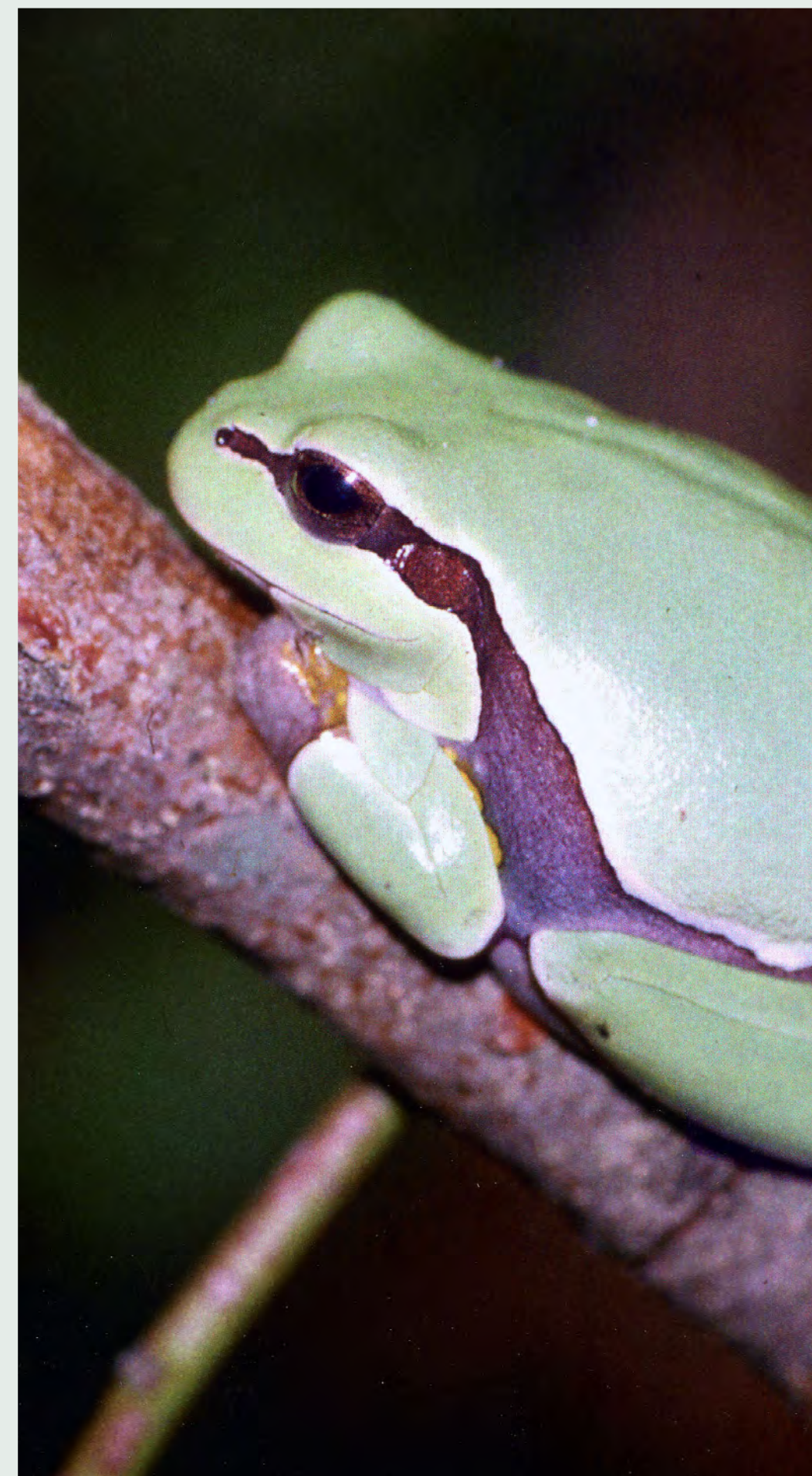




CONSIDERATION OF ENDANGERED AND NONGAME SPECIES

The Endangered and Nongame Species data outlines habitat for animals which includes **State Threatened, State Endangered or Federally Listed Species Habitat** within New Jersey. This information is depicted on the map by three shades of green; Rank 3 - State Threatened (light green), Rank 4 - State Endangered (dark green), Rank 5 - Federally Listed (teal).

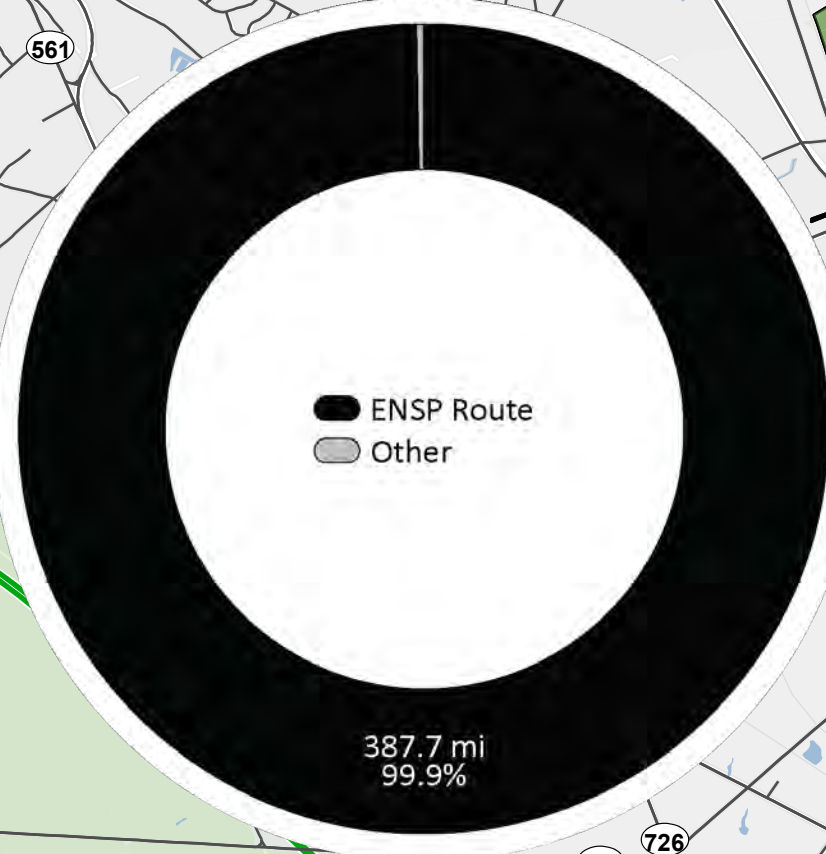
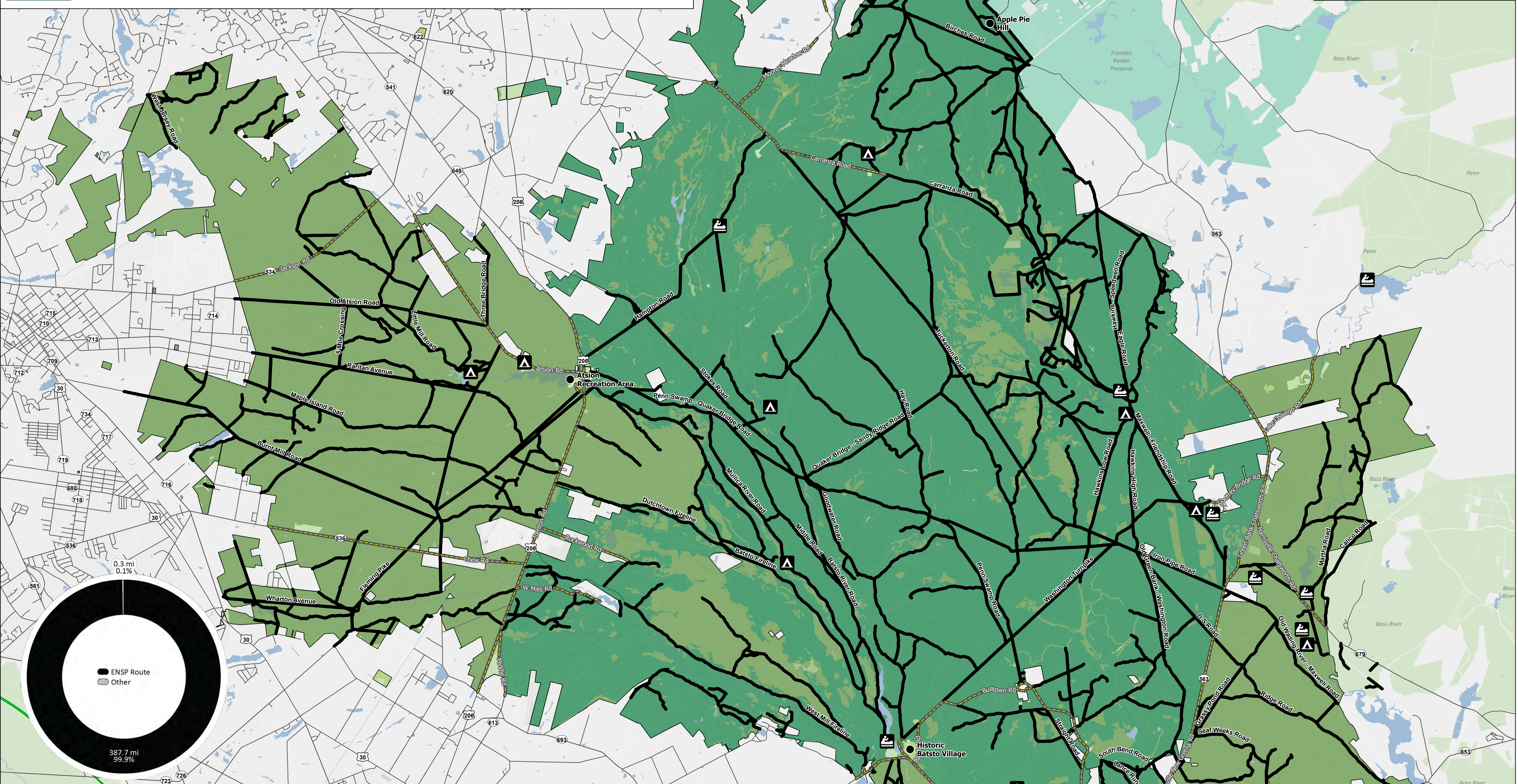
Of the 390 miles of USGS Topographic Map routes, there are 389.7 miles (or 99.9%) of routes that intersect **State Threatened, State Endangered or Federally Listed Species Habitat**.



4

Consideration of Endangered and Nongame Species Wharton State Forest

All motorized vehicles operated on lands under the jurisdiction of the State Park Service are subject to motor vehicle laws of the State of New Jersey, N.J.S.A. 39:1-1, et seq.
The maximum speed limit on all Forest routes is 20 miles per hour, unless otherwise posted.



Legend

- State Threatened & Endangered or Federally Listed Species Routes (389.7 mi)
- USGS Topographic Map Routes (390 mi)
- State Threatened & Endangered or Federally Listed Species Habitat
 - Rank 3 - State Threatened
 - Rank 4 - State Endangered
 - Rank 5 - Federally Listed
- Major Municipal/County/Highway Road in Wharton
- Wharton State Forest
- Waterbody
- Franklin Parker Preserve
- Other State Open Space

