



## USGS Topographic Maps

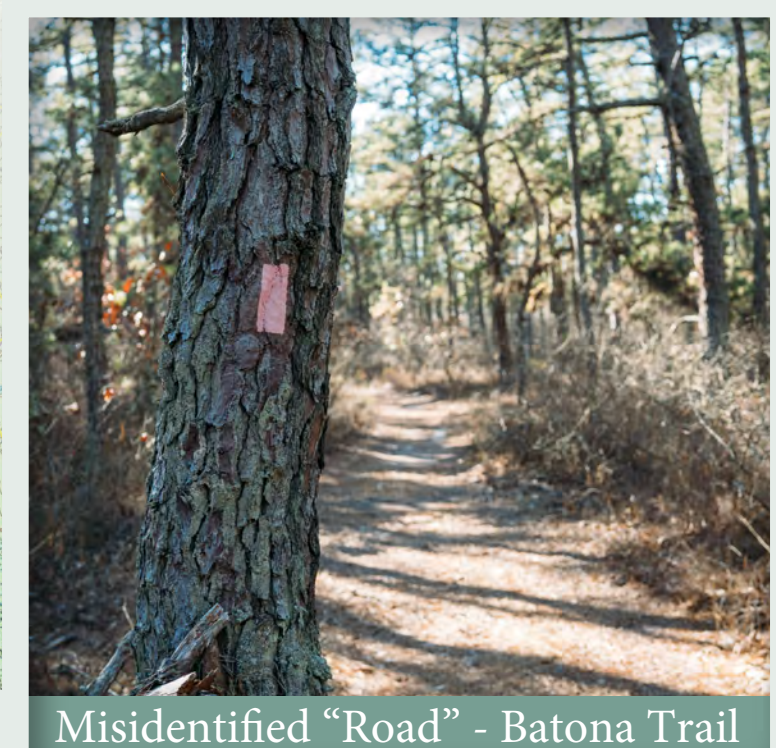
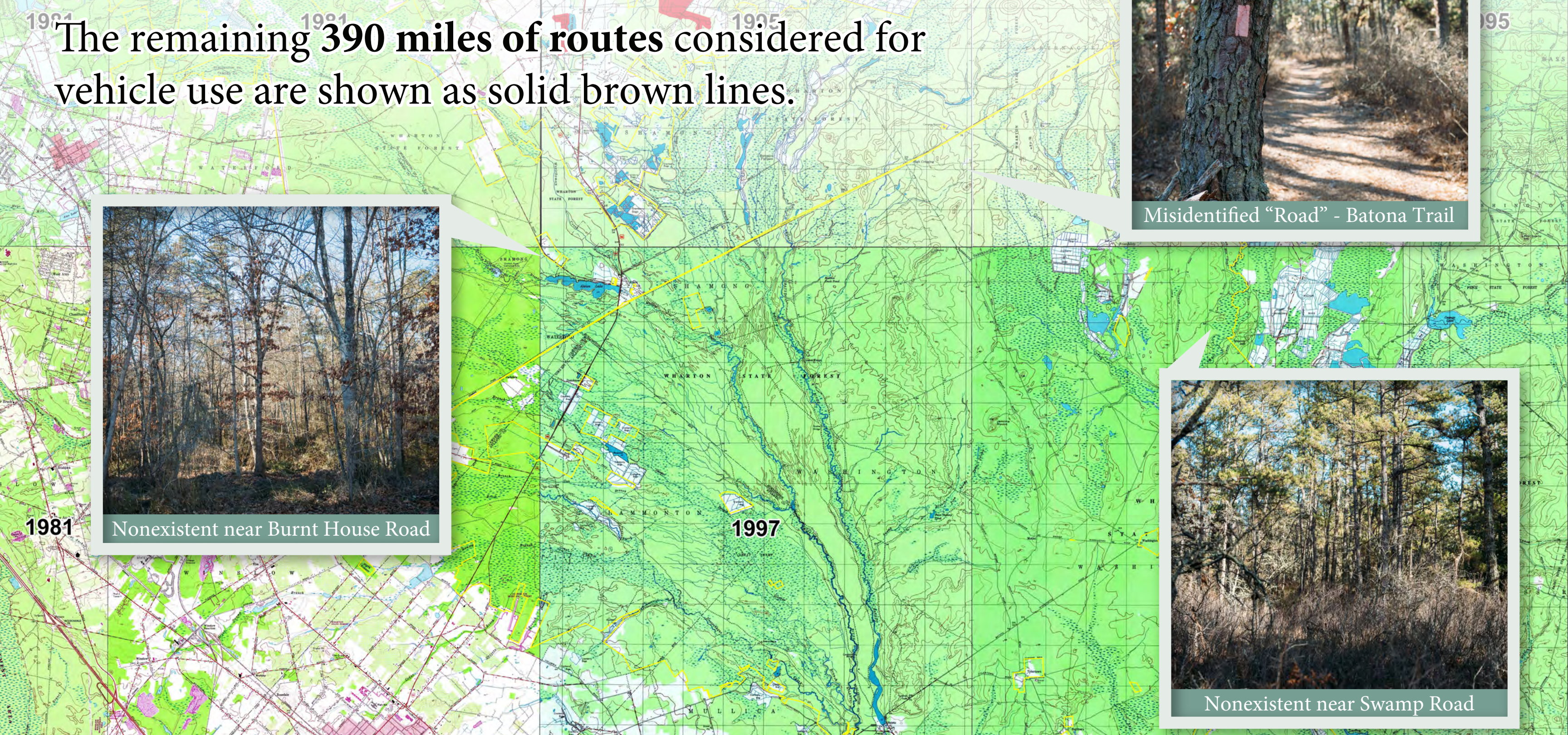
In 2017, the New Jersey Pinelands Commission passed a resolution that adopted **USGS Topographic Maps** which labeled 510 miles of routes within Wharton State Forest.

Further review by the New Jersey Department of Environmental Protection determined that **120 miles of routes** were not routes at all, they were:

- boundary lines
- hiking trails
- nonexistent
- fire control lines
- inaccessible

These misidentified routes are shown as brown-dashed lines on the USGS Topographic Map.

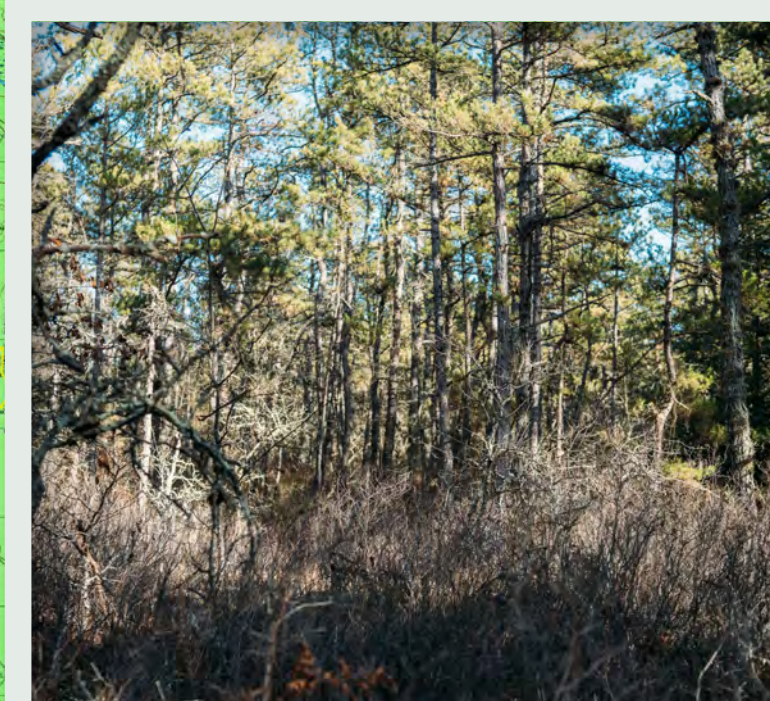
The remaining **390 miles of routes** considered for vehicle use are shown as solid brown lines.



Misidentified "Road" - Batona Trail



Nonexistent near Burnt House Road



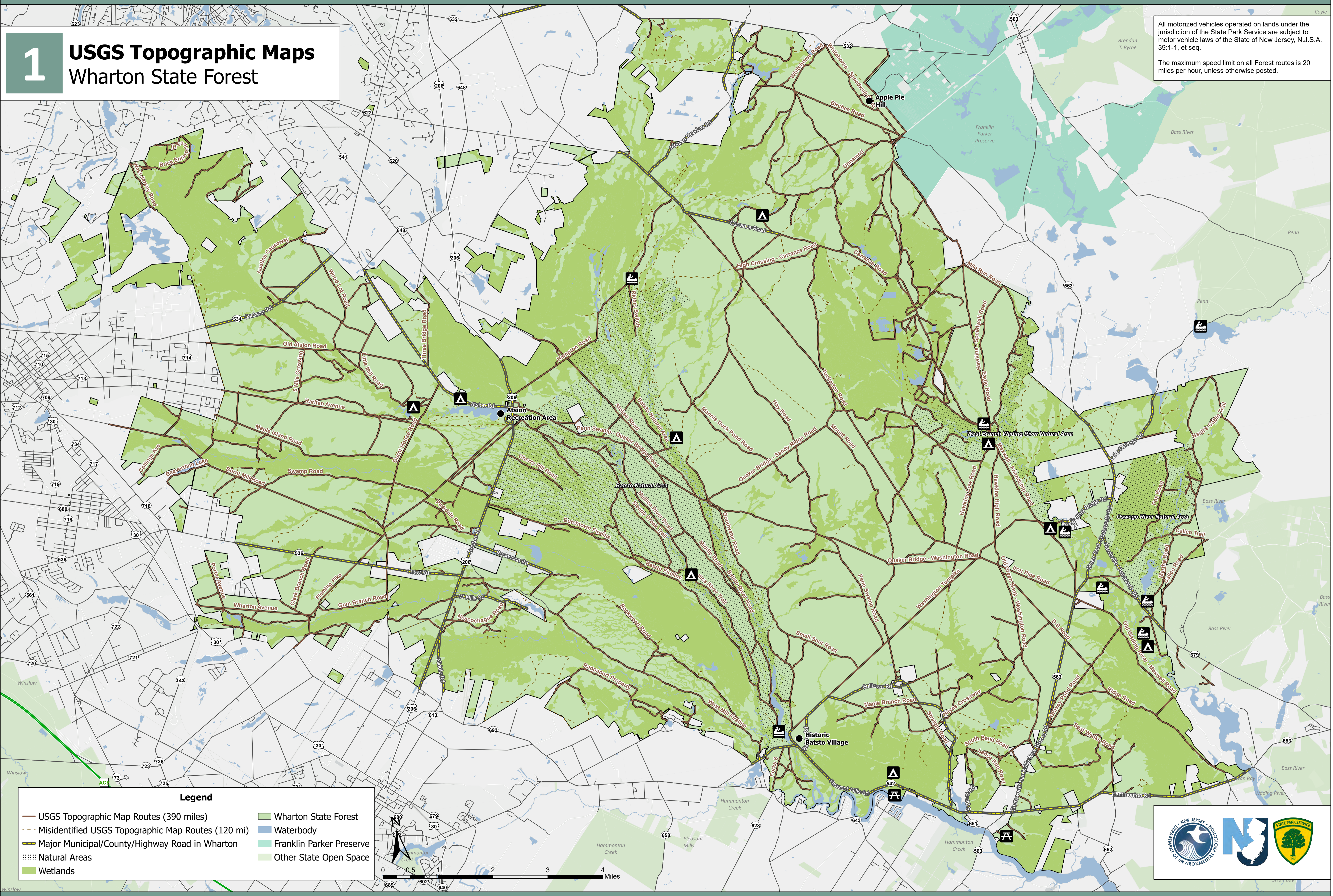
Nonexistent near Swamp Road

# 1

## USGS Topographic Maps Wharton State Forest

All motorized vehicles operated on lands under the jurisdiction of the State Park Service are subject to motor vehicle laws of the State of New Jersey, N.J.S.A. 39:1-1, et seq.

The maximum speed limit on all Forest routes is 20 miles per hour, unless otherwise posted.



### Legend

- USGS Topographic Map Routes (390 miles)
- - - Misidentified USGS Topographic Map Routes (120 mi)
- Major Municipal/County/Highway Road in Wharton
- Wharton State Forest
- Waterbody
- Franklin Parker Preserve
- Other State Open Space
- Natural Areas
- Wetlands

