



COMPARISON MAP

The **Comparison Map** details:

- 190 miles of proposed routes
- 10 miles of proposed routes **not** included on the USGS Topographic Maps
- 200 miles of routes removed for natural and historic resource concerns
- 120 miles of misidentified routes

Yellow routes are proposed for visiting vehicle use. **Yellow routes with black dots** were not included on the USGS Topographic Maps, but added for visiting vehicle use. **Brown routes** were removed due to natural or historic resource concern, based on the natural & historic resource data. **Various colored** misidentified routes were initially removed from the USGS Topographic Maps, each color represents why the route was not considered for vehicle use. Examples of misidentified routes are shown below.



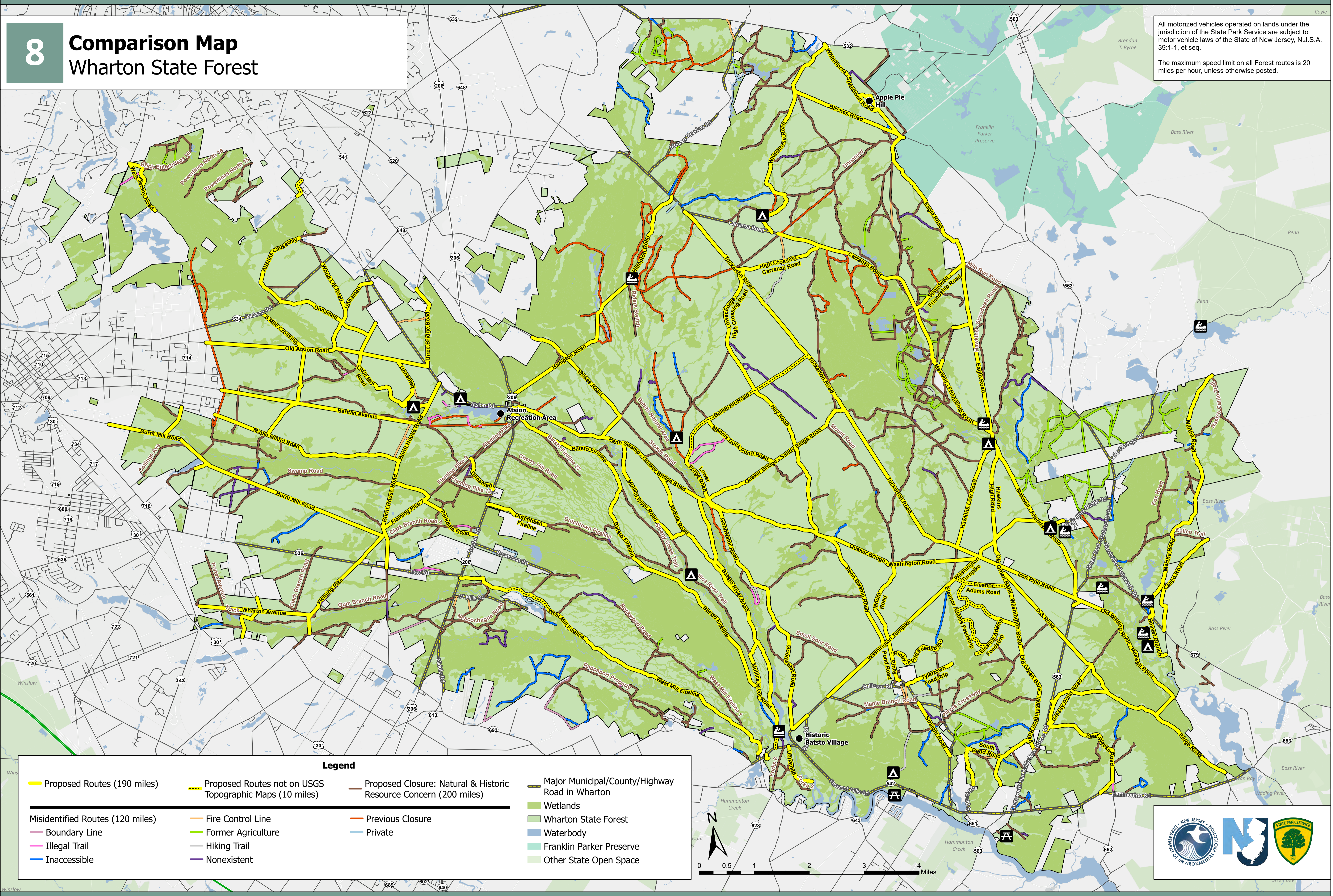
Former Agriculture - Near Carranza Rd

Illegal Trail - Near Chew Rd

Fire Control Line - Near Maple Island Rd

Comparison Map Wharton State Forest

All motorized vehicles operated on lands under the jurisdiction of the State Park Service are subject to motor vehicle laws of the State of New Jersey, N.J.S.A. 39:1-1, et seq.
The maximum speed limit on all Forest routes is 20 miles per hour, unless otherwise posted.



Legend

Proposed Routes (190 miles)	Proposed Routes not on USGS Topographic Maps (10 miles)	Proposed Closure: Natural & Historic Resource Concern (200 miles)	Major Municipal/County/Highway Road in Wharton
Misidentified Routes (120 miles)	Fire Control Line	Previous Closure	Wetlands
Boundary Line	Former Agriculture	Private	Wharton State Forest
Illegal Trail	Hiking Trail		Waterbody
Inaccessible	Nonexistent		Franklin Parker Preserve
			Other State Open Space

