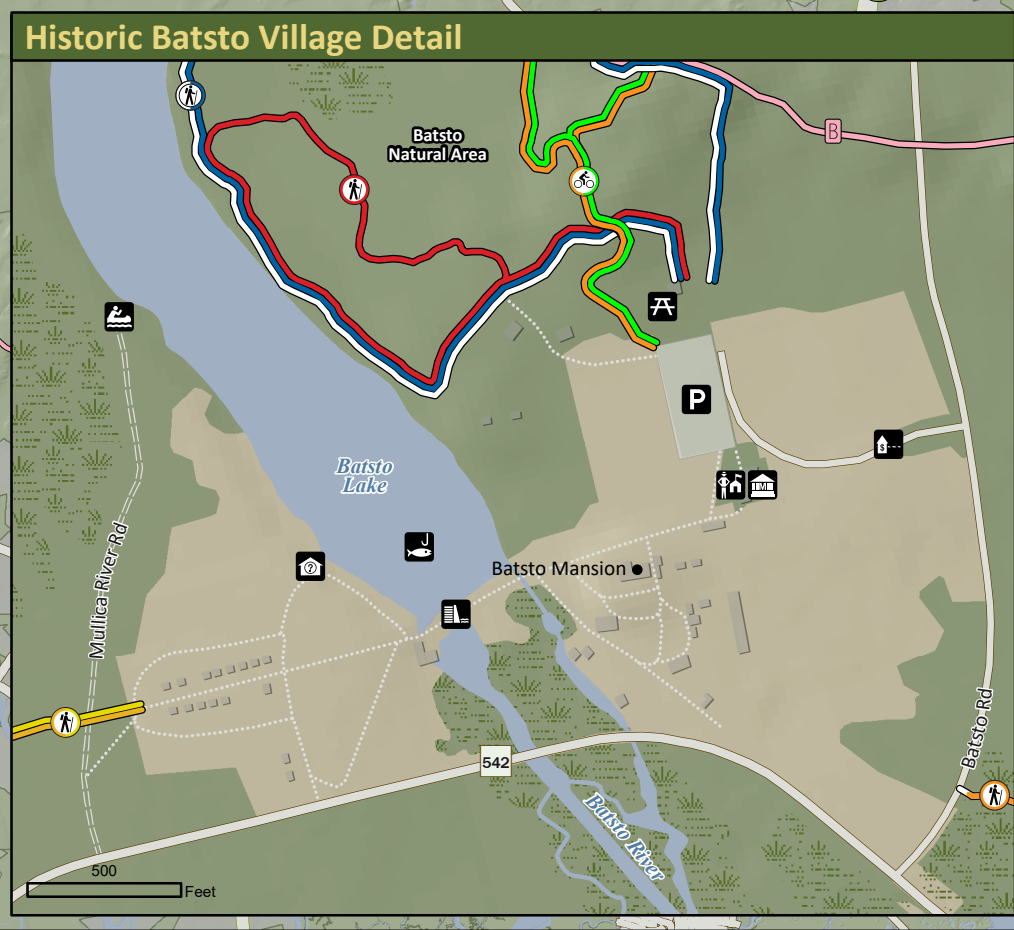
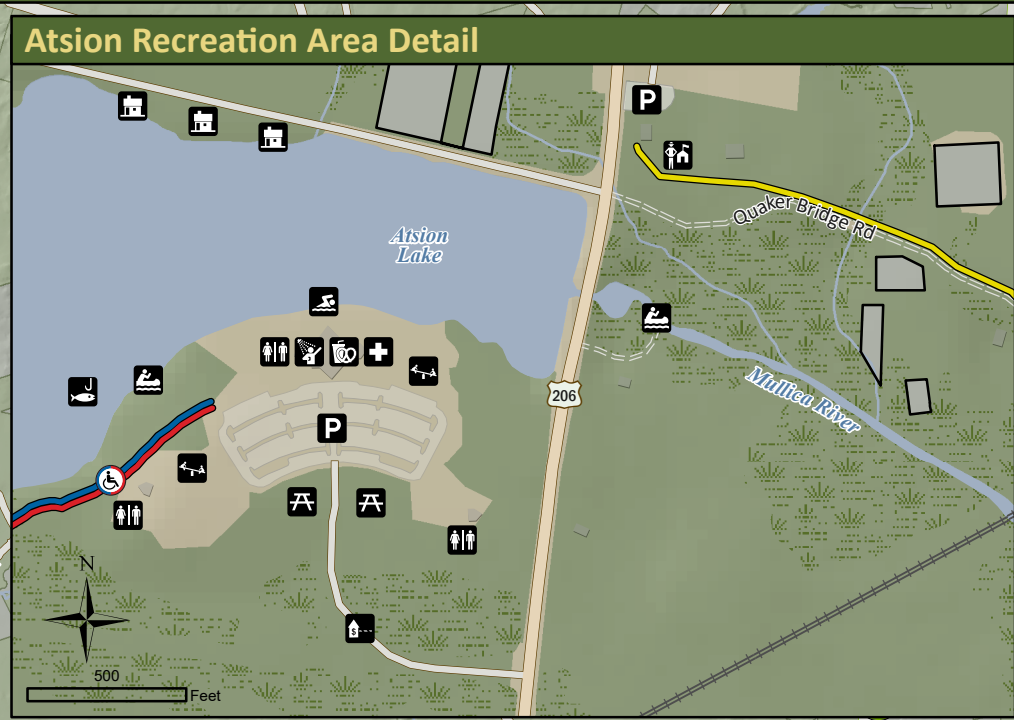
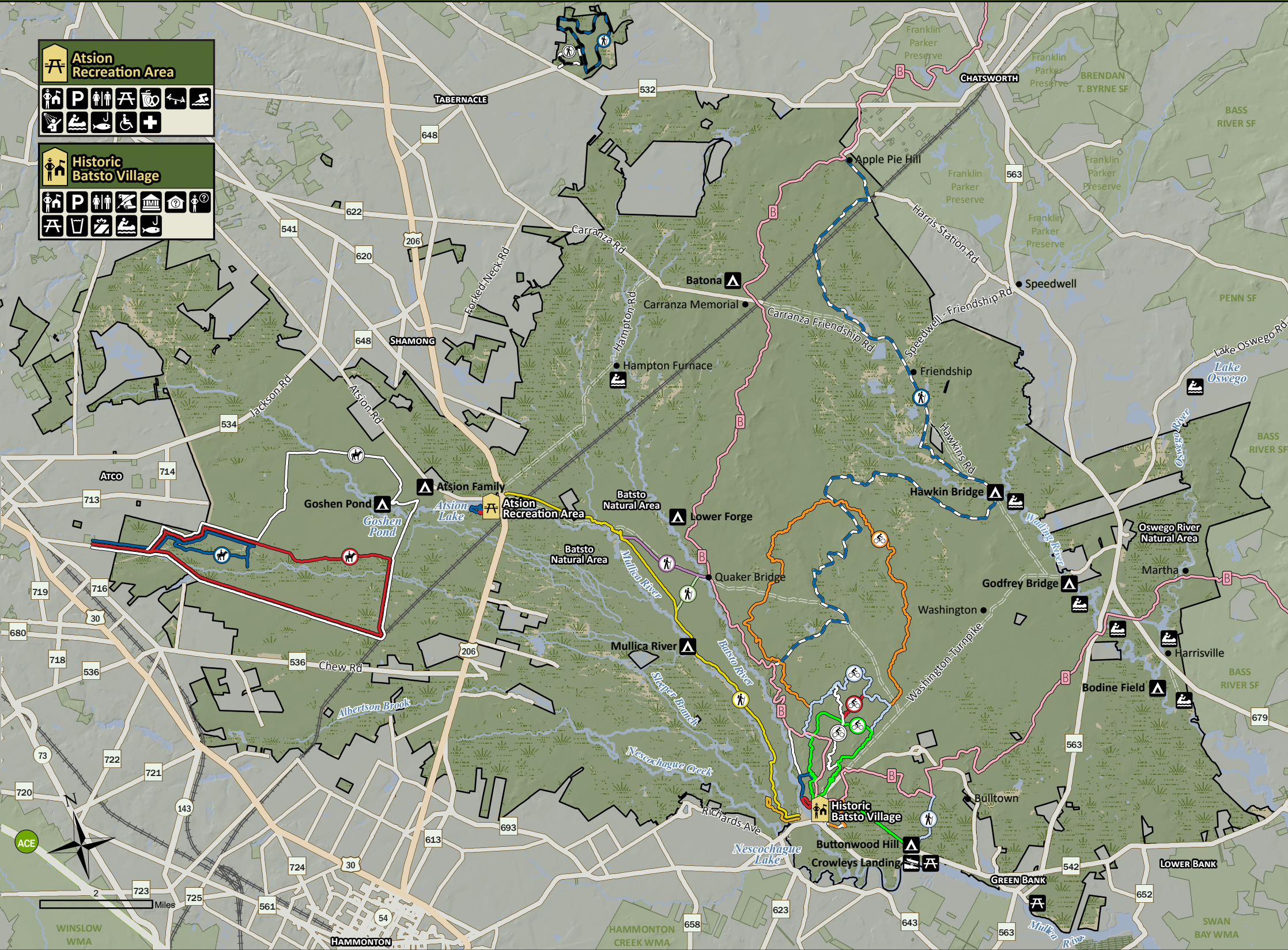


# WHARTON State Forest



Open Field or Grass	Atsion Lake Blue Trail (1 mi)	Batsto Red Trail (0.8 mi)	Sandy Ridge - Tulpehocken Trail (18.2 mi)	Oak Hill Trail (2.5 mi)	Accessible Facility	Drinking Water	Museum	Shop
Forest	Atsion Lake Red Trail (0.5 mi)	Batsto White Trail (4 mi)	Tom's Pond Trail (1.7 mi)	Penn Branch Trail (19.3 mi)	Boat Launch	First Aid	Parking Lot	Shower
Water	Batona Trail (28.2 mi)	Beaver Pond-Quaker Bridge Trail (1.8 mi)	Whispering Pines Trail (3.9 mi)	Teaberry Trail (0.8 mi)	Cabins	Fishing	Picnic Area	Swimming
Wetland	1808 Trail (1.6 mi)	Buttonwood Camp Connector (1.2 mi)	Wilderness Camps Connector (0.75 mi)	Burnt Mill Trail (12 mi)	Campground	Forest Office	Playground	Tours
Improved Road	Atlantic White Cedar Trail (1.7 mi)	Mullica River Trail (9.4 mi)	Batsto Fire Trail (6.2 mi)	Goshen Pond Trail (15.5 mi)	Canoeing	Historic Site	Restrooms	Visitor Contact Station
Unimproved Road	Batsto Blue Trail (1.8 mi)	Sand and Water Trail (0.87 mi)	Huckleberry Trail (5 mi)	Sleeper Creek Trail (5.4 mi)	Concession	Interpretive Center	Scenic View	