

Appalachian Trail Guide-

Northern New Jersey State Parks and Forests



Appalachian Trail Backpacking Guidelines- New Jersey

- AT covers 72.2 miles in New Jersey
- Marked with *White* blazes
- Overnight shelters for camping only
- 10 people maximum per campsite or shelter
- Limited to one night per campsite or shelter
- Pets must be on leash at all times
- No fires permitted on state property
- Carry sufficient water for entire hike as water along trail may not be suitable for consumption
- All water should be chemically treated or boiled for 5 minutes
- All types of motorized vehicles are prohibited on AT except authorized emergencies vehicles
- Carry out all trash
- Cutting, defacing or removing any natural feature is prohibited

Worthington State Forest

(908)841-9575
Columbia, NJ

- 7 miles of AT
- Sunfish Pond is one of New Jersey's Natural Wonders
- **Back Packer campsite** designated for overnight thru hiking use only
- Bear boxes and pit toilets available at site
- Camping at Sunfish Pond **Prohibited**
- Overnight parking at Dunnfield Creek or state forest office

High Point State Park

(973)875-4800
Wantage, NJ

- 18 miles of AT
- Highest point in NJ- Elevation 1803 ft.
- **Mashipacong** shelter, **Rutherford** shelter and **High Point** shelter designated sites
- Bear boxes at all shelters
- Water sources from stream at High Point shelter and park office
- Overnight parking at Appalachian Trail Hiker Parking lot on Rt. 23 south of the park office
- Permit from park office is required for overnight parking

Stokes State Forest

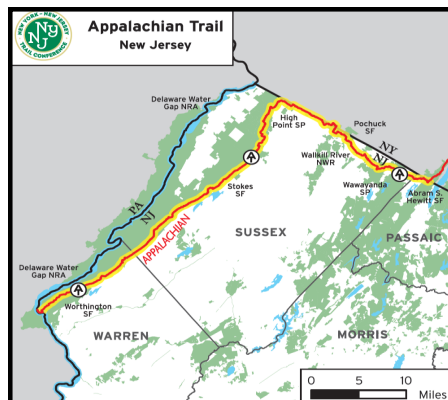
(973)948-3820
Sandyston, NJ

- 12.5 miles of AT
- Sunrise Mountain- Elevation 1,653 ft.
- **Brink Road** shelter and **Gren Anderson** shelter designated sites
- Water source at both, but needs to be treated
- Bear boxes and pit toilets at both
- Overnight parking at Culver's Gap just south of park office
- Permit from park office is required for overnight parking

Wawayanda State Park

(973)853-4462
Hewitt, NJ

- 20 miles of AT
- **Wawayanda** means 'Winding, winding water' in Lenape
- **Pochuck** shelter and **Wawayanda** shelter designated sites
- Water accessible at park office and at Pochuck shelter
- Bear boxes and pit toilets at both shelters
- Overnight parking at main office



To report an emergency, accident or violation of law, contact **DEP dispatch:**

877-WARN-DEP
(877-927-6337)